



8th ANNUAL



PORTERFIELD COUNTRY MUSIC FESTIVAL

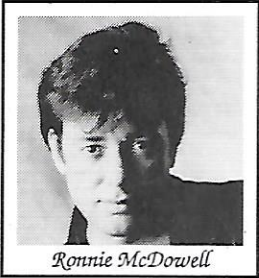
Marinette, Wisconsin, USA.

At the Green's Green Acres 6 Miles West of Marinette, on Hwy. 64

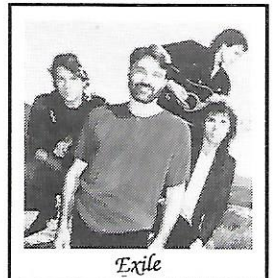
Camping on Grounds. Gate Opens at 9:00 A.M. 6/18/90. For Information Call: (715)789-2130 or (715)732-1630.
Or Write: Porterfield Country, Inc. W3525 Peters Rd., Marinette, WI 54143 Concession Information Call: (715)732-2752

SWEET COUNTRY MUSIC JUNE 22, 23 & 24 1990 NASHVILLE RECORDING STARS

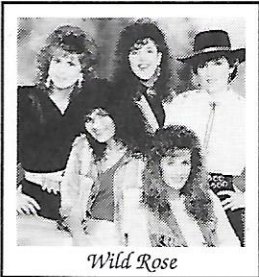
Thursday Night BOBBY PIERCE Sponsored By Miller Genuine Draft



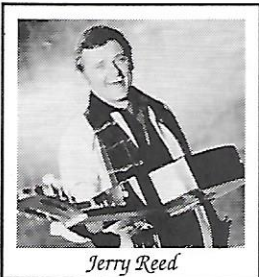
Ronnie McDowell



Exile



Wild Rose

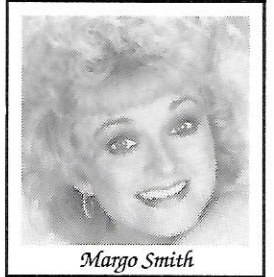


Jerry Reed

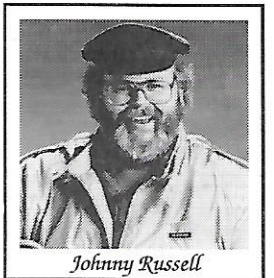
FRIDAY
(ONE SHOW EACH)
WILD ROSE
EXILE
KENNY ARNOLD
Steve Michels
K-J & Company
Open Exchange
City Limits
Night Time Magic

SATURDAY
(TWO SHOWS EACH)
RONNIE McDOWELL
MARGO SMITH
REX ALLEN Jr.
(ONE SHOW EACH)
Junction Express
Cheryl Lynn & JT
Jerry Kobishop
& New Moonlighters

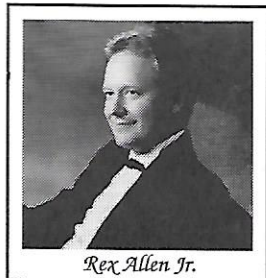
SUNDAY
(TWO SHOWS EACH)
JERRY REED
JOHNNY RUSSELL
BARBARA FAIRCHILD
(ONE SHOW EACH)
Chuck Travis
Bobby Darren
& The Drifters



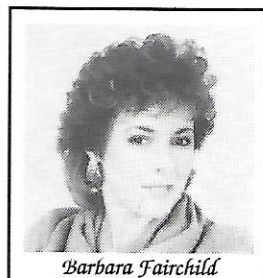
Margo Smith



Johnny Russell



Rex Allen Jr.



Barbara Fairchild

WEEKEND TICKETS

Ticket Price \$35.00
Prior 6/16/90 \$30.00
Prior 4/30/90 \$25.00

Children under 12 Free with Parents
All Taxes Included

DAILY TICKETS

Ticket Price \$18.00
Prior 6/16/90 \$15.00

All sales are final no refunds or exchanges
Schedule Subject to Change Without Notice
All Taxes Included

TICKETS AVAILABLE AT



The Official
Radio Station

Marinette
Courtesy Motel
Mark's Place
Sweet Wax
Helen's Edgewater
Paul's Music
Terry's Knight Kap
Piggly Wiggly
Walker's DuRite
Porterfield
Timberwood
Corner Grill & Bar
Harmony Grocery

Iron Mountain, MI
The Music Tree
Peshigo
Peshigo Pharmacy
Pete's Sport Shop
Little Suamico
Doug & Kathy's Pub
West Bend
The Exclusive Company
Oshkosh
The Exclusive Company
Appleton
The Exclusive Company

Green Bay
The Exclusive Company
MASS
The Settlement Bar
Milwaukee
McCue's Trac Inn
Oconto
Woody's OK Bar
Crivitz
Cherry's Country Electronics
County Line
John & Penny's Cinderella Bar
Middle Inlet

Stevens Point
The Tea Shop
Wausau
The Tea Shop
Wisconsin Rapids
The Tea Shop
Marshfield
The Tea Shop
Manitowoc
DR. Freud's
Antigo
The Thirsty Cowboy

Sturgeon Bay
Red Room
Fish Creek
Bay Side Tavern
Lake Noguebay
Pines Resort
Menominee, MI
West End Bar
Aberdeen
Racine
Coe Construction